

LifeWatch Belgium



Lennert Schepers
Coordinator LifeWatch Flanders

LifeWatch

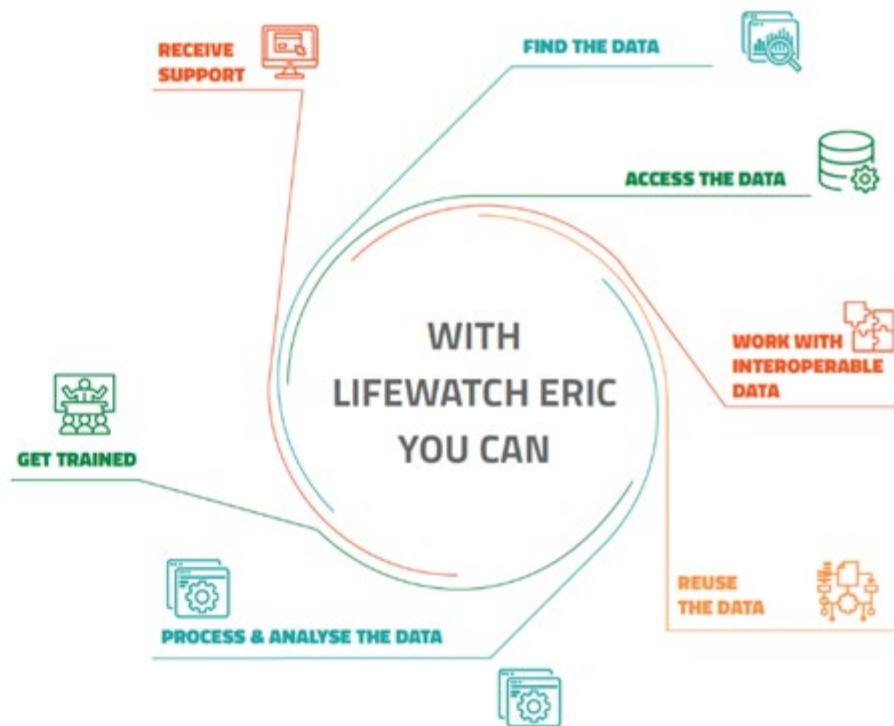
- Introduction LifeWatch
- LifeWatch Belgium
- Collaborations

Introduction LifeWatch

LifeWatch ERIC

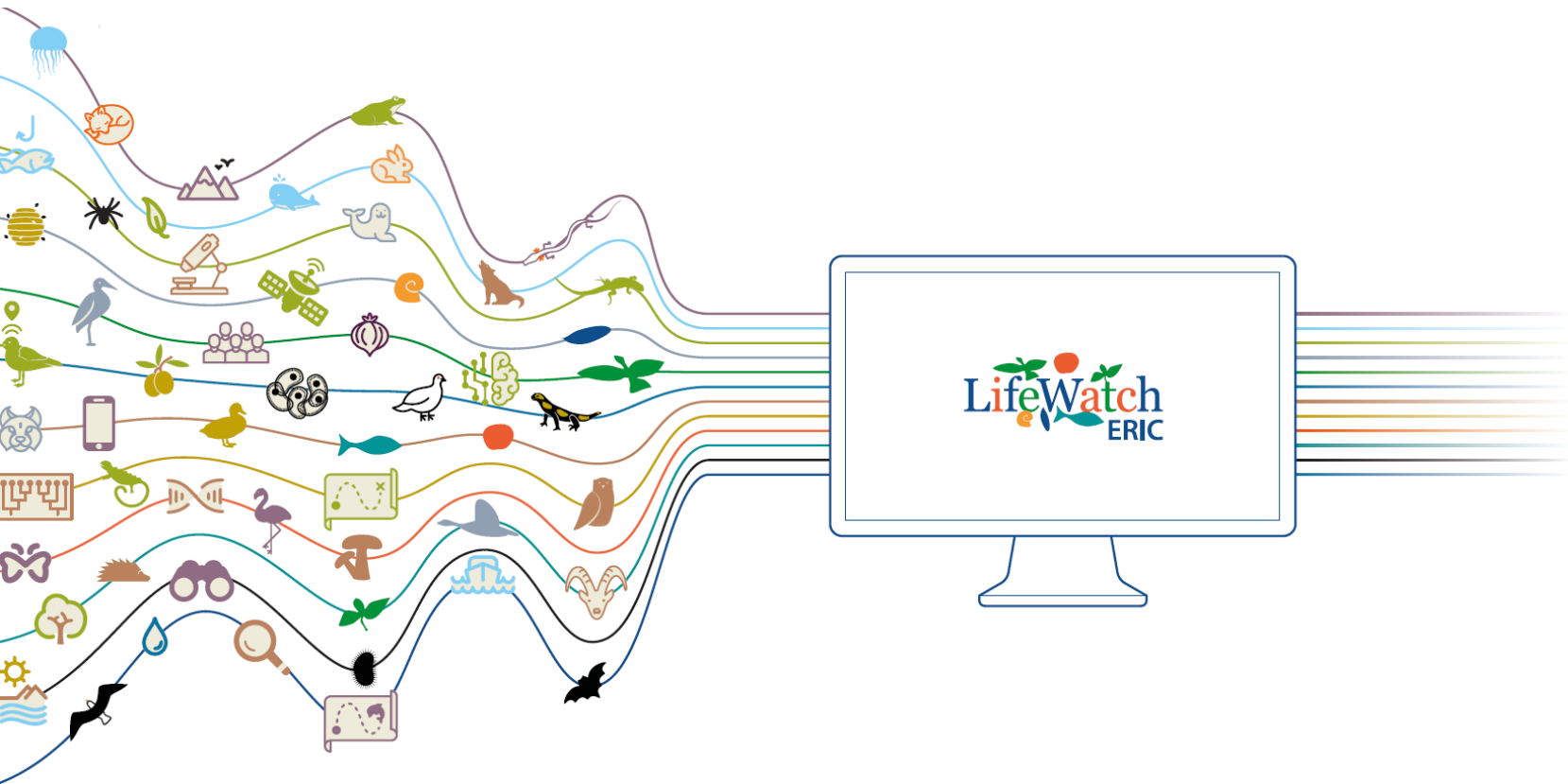
e-Infrastructure for Biodiversity and Ecosystem Research

A distributed e-Infrastructure to support research and sustainability of biodiversity and ecosystems

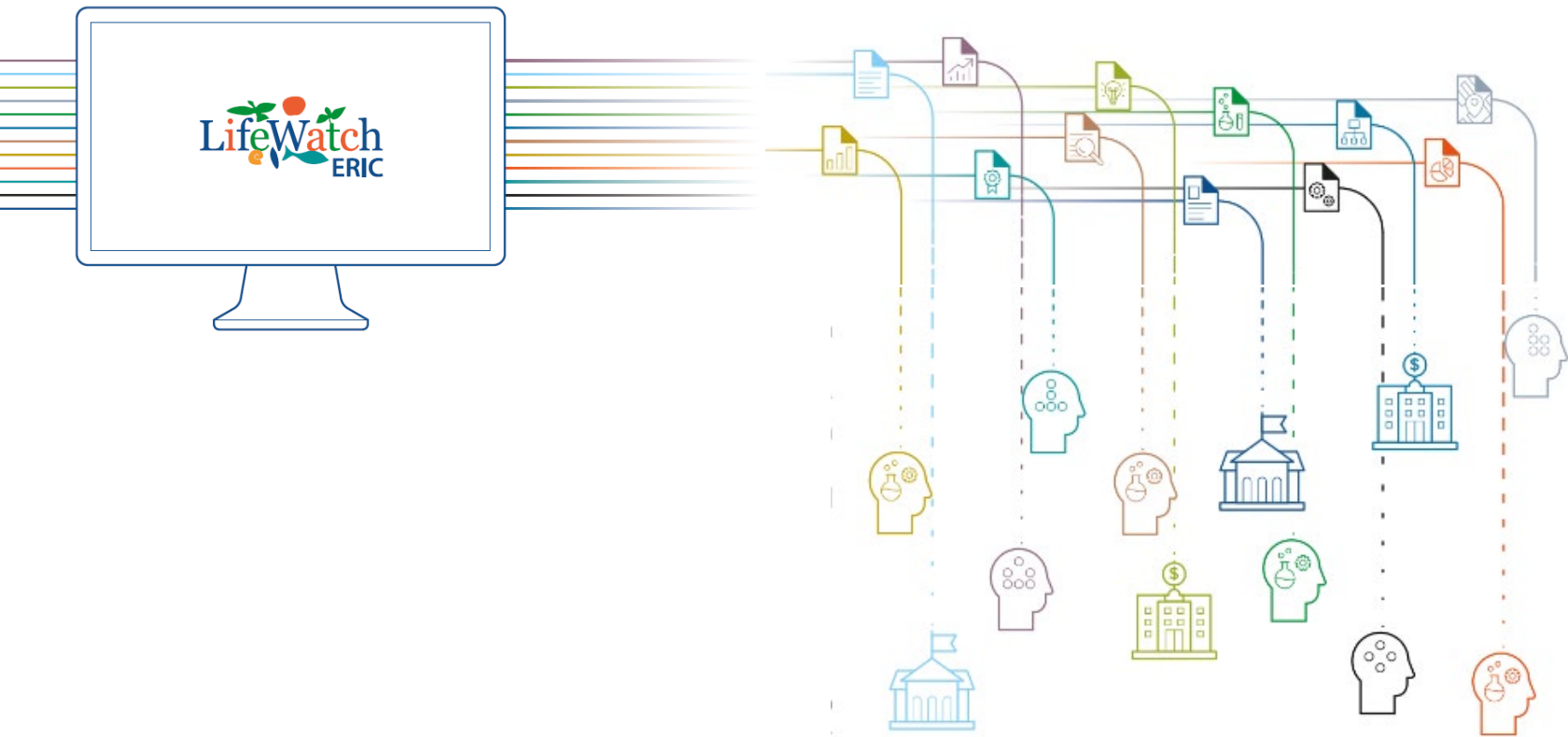




What is LifeWatch?



What is LifeWatch?



LifeWatch Belgium

What is LifeWatch Belgium?



Species Information Backbone

Central LifeWatch service that facilitates the standardisation and integration of species data and provides access



Marine Freshwater Terrestrial Observatory

Integrated observation systems that generate long-term and openly accessible biodiversity data applying innova-



Thematic remote sensing

An interactive geoportal provides thematic pan-European remote sensing data. An object-based ecotope database



Antarctic Biodiversity Portal

The Antarctic Biodiversity Portal (biodiversity.aq) works closely with the Scientific Committee on Antarctic Research (SCAR) to provide access to data and tools for un-



BopCo

The Barcoding Facility for Organisms and Tissues of Policy Concern (BopCo) provides, upon request, identifications of organisms or derived tissues and products of policy concern.

Life Watch Flanders



Life Watch Flanders

RESEARCH INSTITUTE
NATURE AND FOREST



Life Watch Wallonia-
Brussels



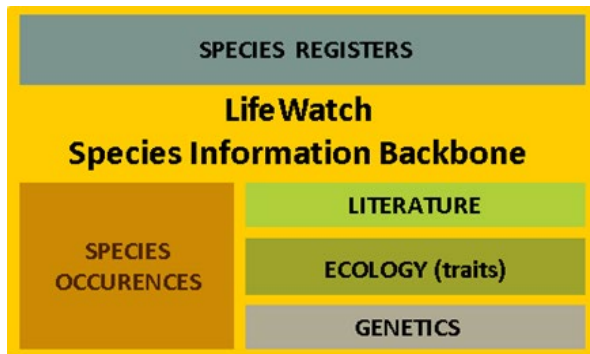
Life Watch Federal
contribution



Life Watch Federal
contribution



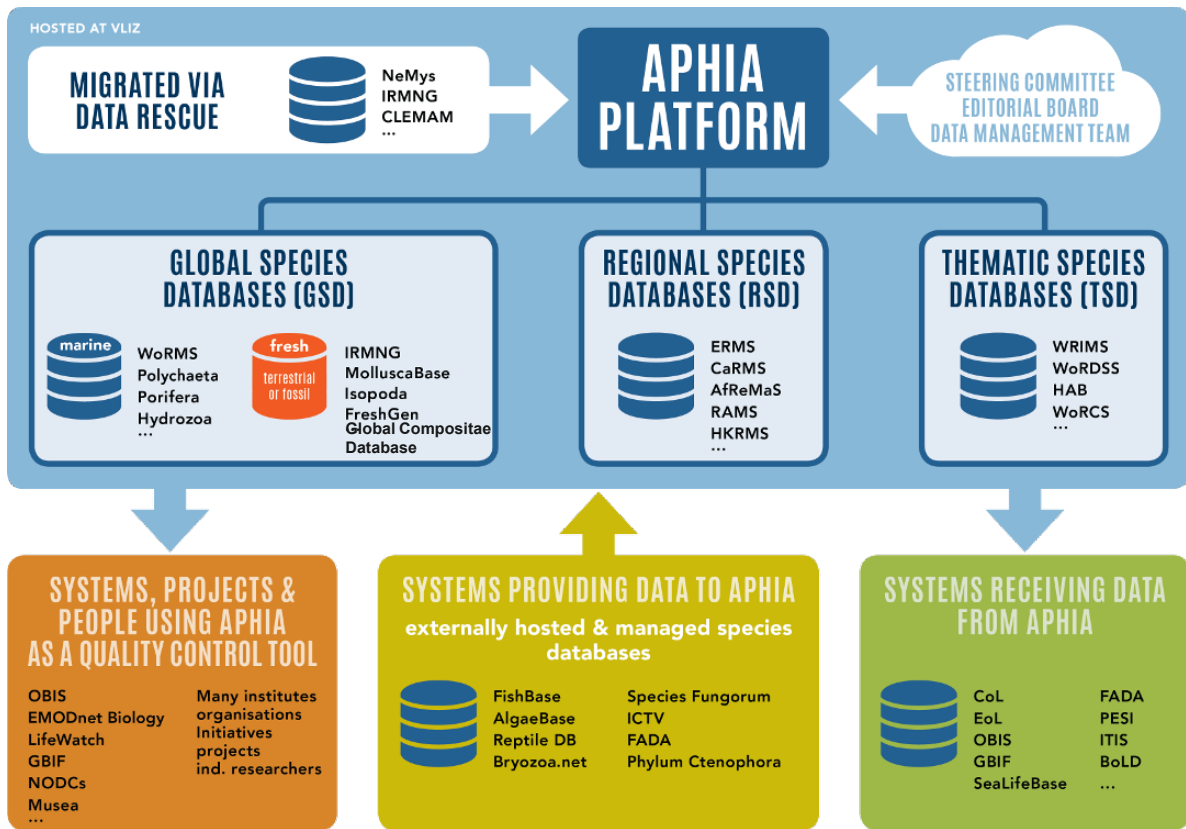
LifeWatch Species Information Backbone



Aphia

APHIA PLATFORM

Taxonomy
Distribution
Attributes
Specimen
Vernacular names
Identification keys
Notes
Links
Images
Internal database management



WoRMS



Taxonomic database that aims to provide an authoritative and comprehensive list of names of marine organisms

An authoritative classification and catalogue of marine names



Currently in WoRMS



Accepted marine species

242 133 (97% checked)



Species with image

41 588 (60% checked)



Registered institutional users

421



Citations

7124



Marine species names, including synonyms

497 799



WoRMS editors

320

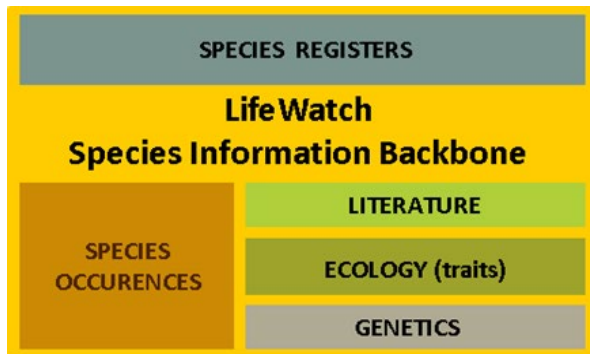


Webhits

94 636 312 (In 2022)

WoRMS uses the **Aphia** system

LifeWatch Species Information Backbone



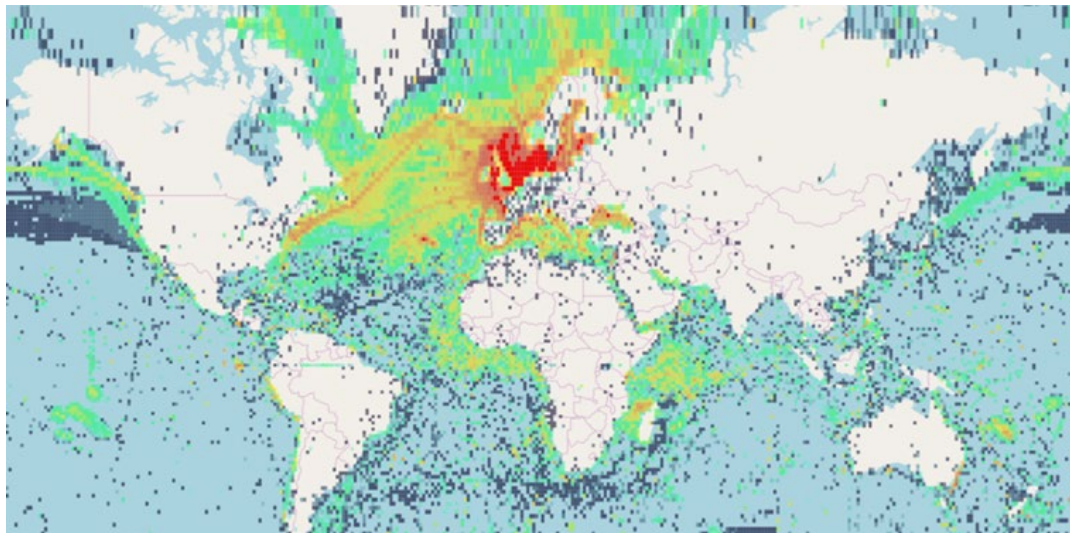
EurOBIS – the European node of OBIS



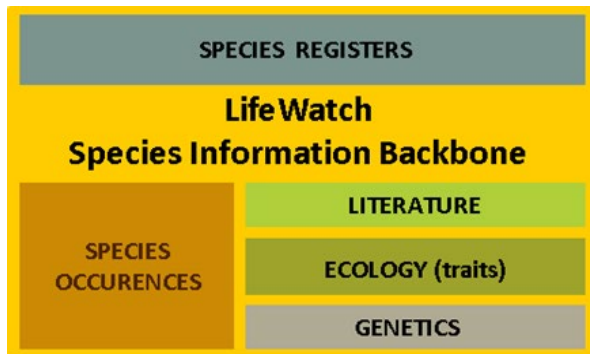
European Ocean Biodiversity
Information System

dataset on temporal and spatial
distribution of **marine species** and
species traits from all European
regional seas

- 30 M species occurrence records
- 57 M measurements or facts
- 1251 datasets



LifeWatch Species Information Backbone



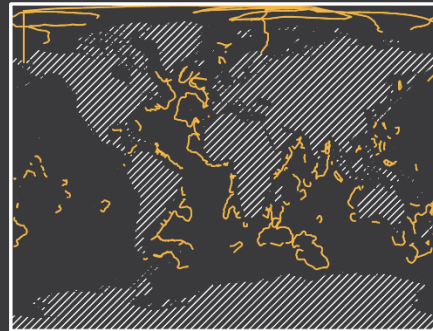
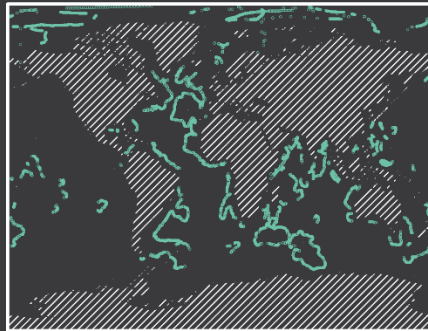
Geographic 'glue': Marine Regions



Marineregions.org

towards a standard for georeferenced marine names

- Standard list of marine georeferenced place names and areas.
- **62,976** marine georeferenced places
- Sources: authoritative gazetteers, ecological classifications,...



The birth of a new Marine Regions data product

Extended Continental Shelves

47 307 points

315 lines

134 polygons



marineregions.org



<https://doi.org/10.14284/577>

Marine freshwater terrestrial observatories

The observatory



RV Simon Stevin sampling campaigns



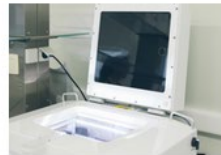
Broadband Acoustic Network



Fish acoustic receiver network



Video Plankton Recorder (VPR)



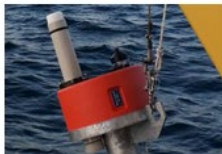
Zooplankton imaging sensor
Zooscan



Marine genomic observations



GPS Bird tracking network



Cetacean passive acoustic
network



Sensor network for bat detection



Birdcams



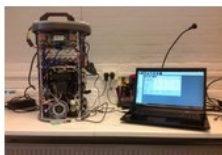
Remote groundwater monitoring



Climate monitoring research
infrastructure (KLIVEG)



Motus wildlife tracking network



Phytoplankton scanning sensor
Flow cytometer



Phytoplankton imaging sensor
FlowCam



Camera trap research
infrastructure (CATREIN)



Space remote sensing sensors



Aerial remote sensing sensor

Marine freshwater terrestrial observatories

The observatory – from sensor to virtual labs & data aggregators

- Acoustic network



- Bird tracking network



- Camera traps



- Fish telemetry network



- Marine biodiversity surveys & plankton imaging



- Marine genomics



- Soil moisture and groundwater



Camera traps & fish telemetry: development of international data platforms (Agouti & ETN)

Agouti



AGOUTI



325

Projects

75.000

Deployments

5.200.000

Observations

91.000.000

Images

Data package
publication

zenodo

Observation data

GBIF

Data standard
Camtrap DP



AGOUTI

Project management

User management

Sampling management

Image import

Image annotation

Data export

Crowdsourcing
ZOONIVERSE

Automated
image
recognition

Density
estimation tool



Import



Annotate



Analyze



Export

European Tracking Network (ETN)

EUROPEAN TRACKING NETWORK

**TRACKING AQUATIC ANIMALS
AT A PAN-EUROPEAN SCALE**

An introduction to telemetry and tagging methods



What is ETN? Why use it?

Horizontal bar chart showing the number of species in various fish families. The x-axis represents the number of species, ranging from 0 to 4000. The y-axis lists fish families. The European eel (Anguilla anguilla) is highlighted with a blue dot at approximately 1000 species. The Atlantic salmon (Salmo salar) is highlighted with a blue dot at approximately 3500 species.

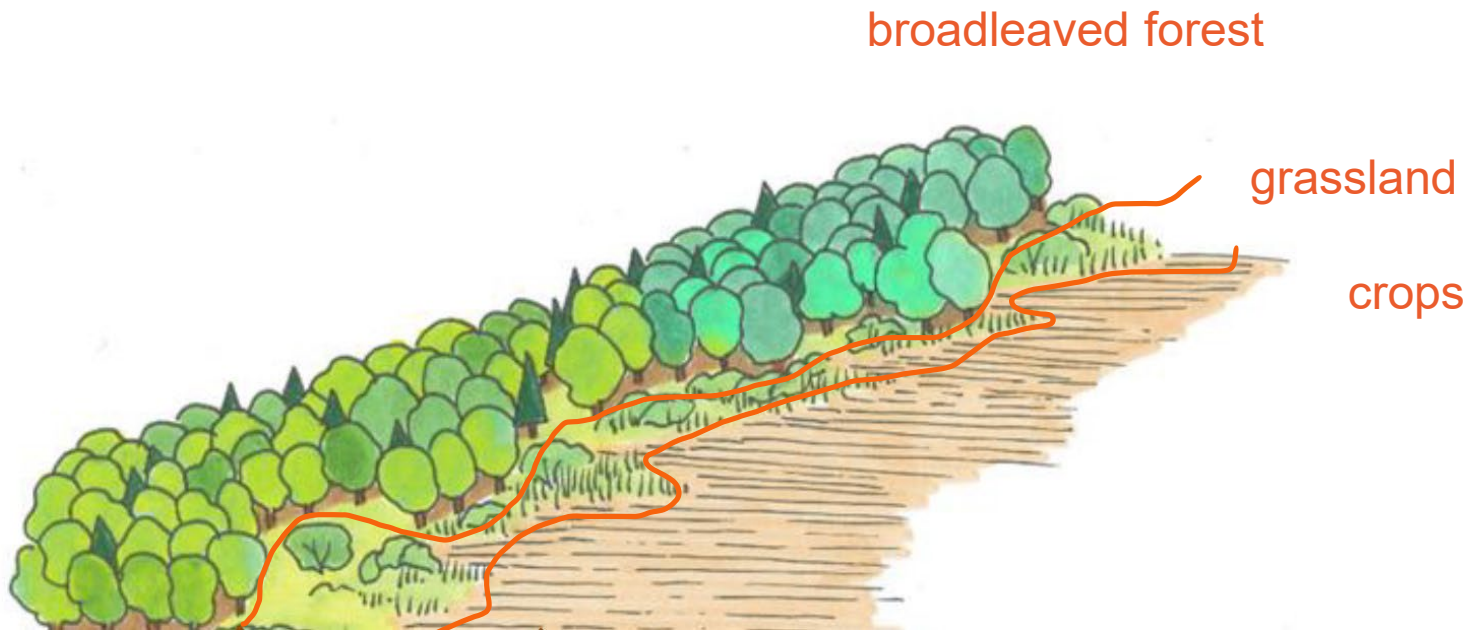
Fish Family	Approximate Number of Species
Salmo salar	3500
Anguilla anguilla	1000
Salmo trutta	800
Gadus morhua	700
Spicara scottii	600
Scorpaenidae	500
Merluccius	400
Trachurus	300
Anguilla	200
Scorpaenidae	150
Merluccius	100
Trachurus	50
Scorpaenidae	20
Merluccius	10
Trachurus	5
Scorpaenidae	2
Merluccius	1
Trachurus	0.5
Scorpaenidae	0.2
Merluccius	0.1
Trachurus	0.05
Scorpaenidae	0.02
Merluccius	0.01
Trachurus	0.005
Scorpaenidae	0.002
Merluccius	0.001
Trachurus	0.0005
Scorpaenidae	0.0002
Merluccius	0.0001
Trachurus	0.00005
Scorpaenidae	0.00002
Merluccius	0.00001
Trachurus	0.000005
Scorpaenidae	0.000002
Merluccius	0.000001
Trachurus	0.0000005
Scorpaenidae	0.0000002
Merluccius	0.0000001
Trachurus	0.00000005
Scorpaenidae	0.00000002
Merluccius	0.00000001
Trachurus	0.000000005
Scorpaenidae	0.000000002
Merluccius	0.000000001
Trachurus	0.0000000005
Scorpaenidae	0.0000000002
Merluccius	0.0000000001
Trachurus	0.00000000005
Scorpaenidae	0.00000000002
Merluccius	0.00000000001
Trachurus	0.000000000005
Scorpaenidae	0.000000000002
Merluccius	0.000000000001
Trachurus	0.0000000000005
Scorpaenidae	0.0000000000002
Merluccius	0.0000000000001
Trachurus	0.00000000000005
Scorpaenidae	0.00000000000002
Merluccius	0.00000000000001
Trachurus	0.000000000000005
Scorpaenidae	0.000000000000002
Merluccius	0.000000000000001
Trachurus	0.0000000000000005
Scorpaenidae	0.0000000000000002
Merluccius	0.0000000000000001
Trachurus	0.00000000000000005
Scorpaenidae	0.00000000000000002
Merluccius	0.00000000000000001
Trachurus	0.000000000000000005
Scorpaenidae	0.000000000000000002
Merluccius	0.000000000000000001
Trachurus	0.0000000000000000005
Scorpaenidae	0.0000000000000000002
Merluccius	0.0000000000000000001
Trachurus	0.00000000000000000005
Scorpaenidae	0.00000000000000000002
Merluccius	0.00000000000000000001
Trachurus	0.000000000000000000005
Scorpaenidae	0.000000000000000000002
Merluccius	0.000000000000000000001
Trachurus	0.0000000000000000000005
Scorpaenidae	0.0000000000000000000002
Merluccius	0.0000000000000000000001
Trachurus	0.00000000000000000000005
Scorpaenidae	0.00000000000000000000002
Merluccius	0.00000000000000000000001
Trachurus	0.000000000000000000000005
Scorpaenidae	0.000000000000000000000002
Merluccius	0.000000000000000000000001
Trachurus	0.0000000000000000000000005
Scorpaenidae	0.0000000000000000000000002
Merluccius	0.0000000000000000000000001
Trachurus	0.00000000000000000000000005
Scorpaenidae	0.00000000000000000000000002
Merluccius	0.00000000000000000000000001
Trachurus	0.000000000000000000000000005
Scorpaenidae	0.000000000000000000000000002
Merluccius	0.000000000000000000000000001
Trachurus	0.0000000000000000000000000005
Scorpaenidae	0.0000000000000000000000000002
Merluccius	0.0000000000000000000000000001
Trachurus	0.00000000000000000000000000005
Scorpaenidae	0.00000000000000000000000000002



Thematic Remote Sensing

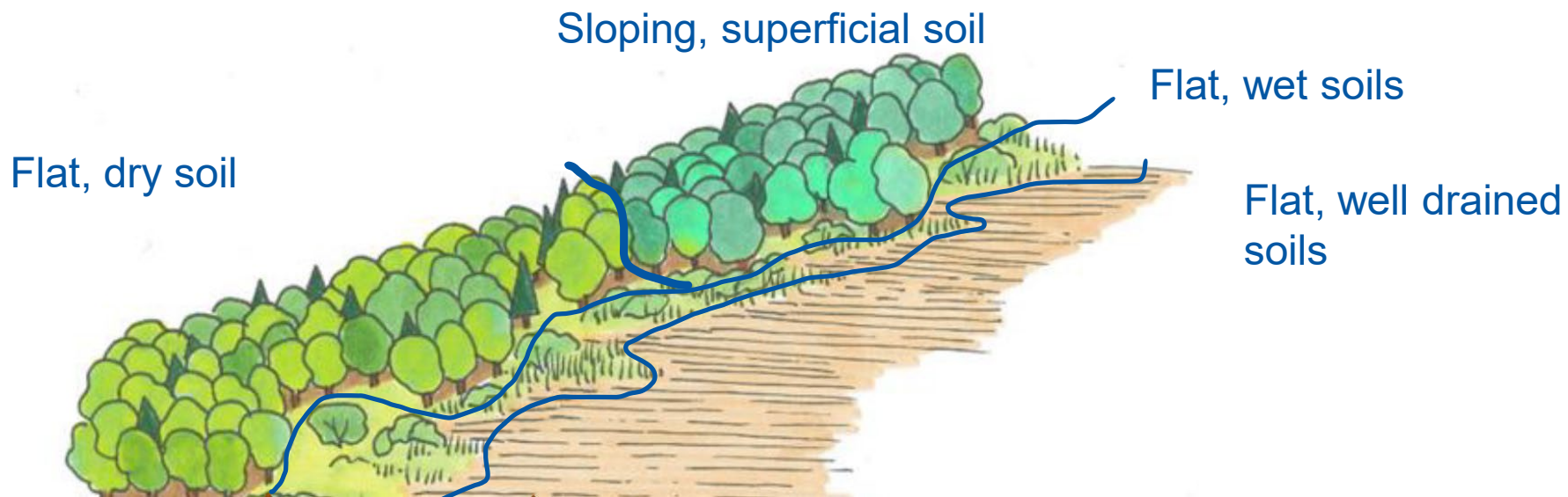
Thematic Remote Sensing

- Land cover



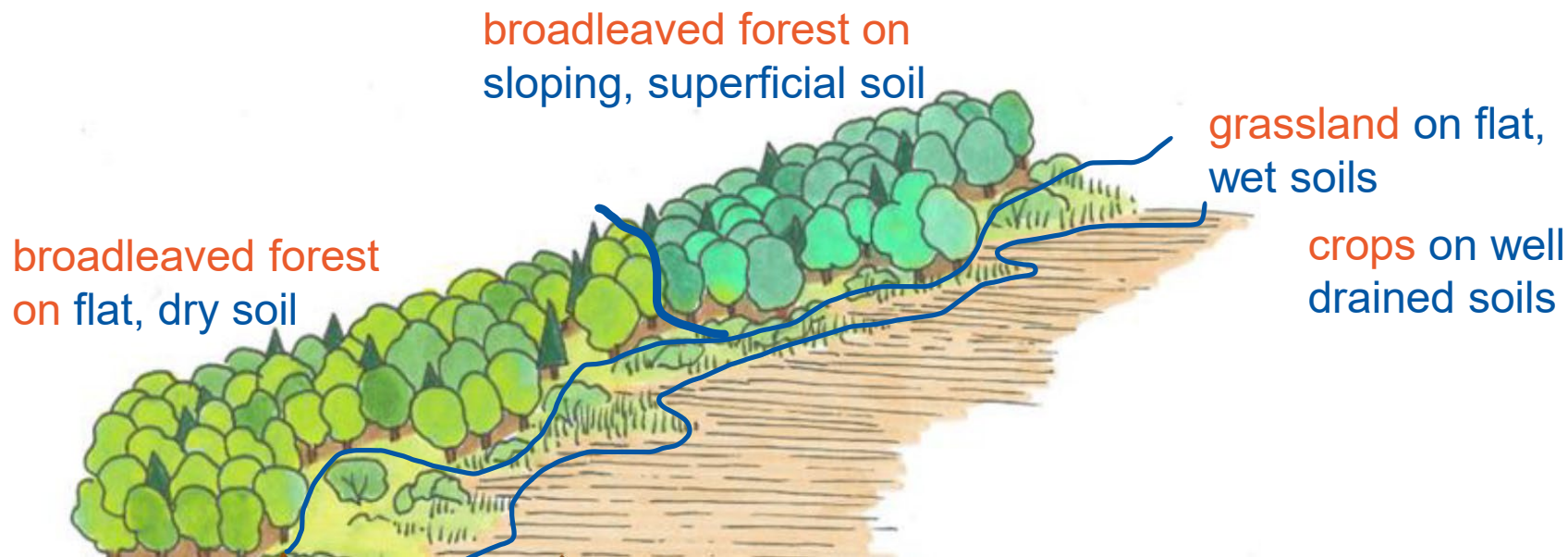
Thematic Remote Sensing

- **Biotope:** topography and slope



Thematic Remote Sensing

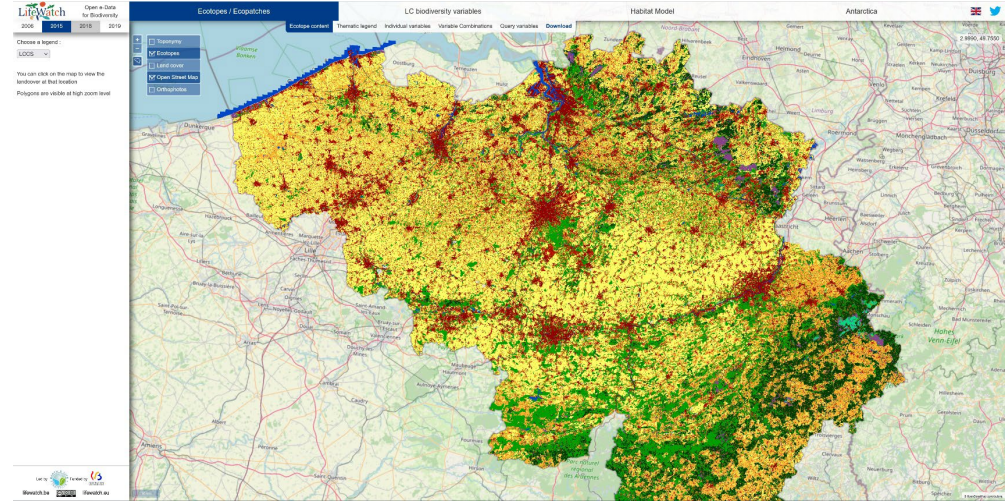
- **Ecotope:** smallest ecologically distinct spatial unit

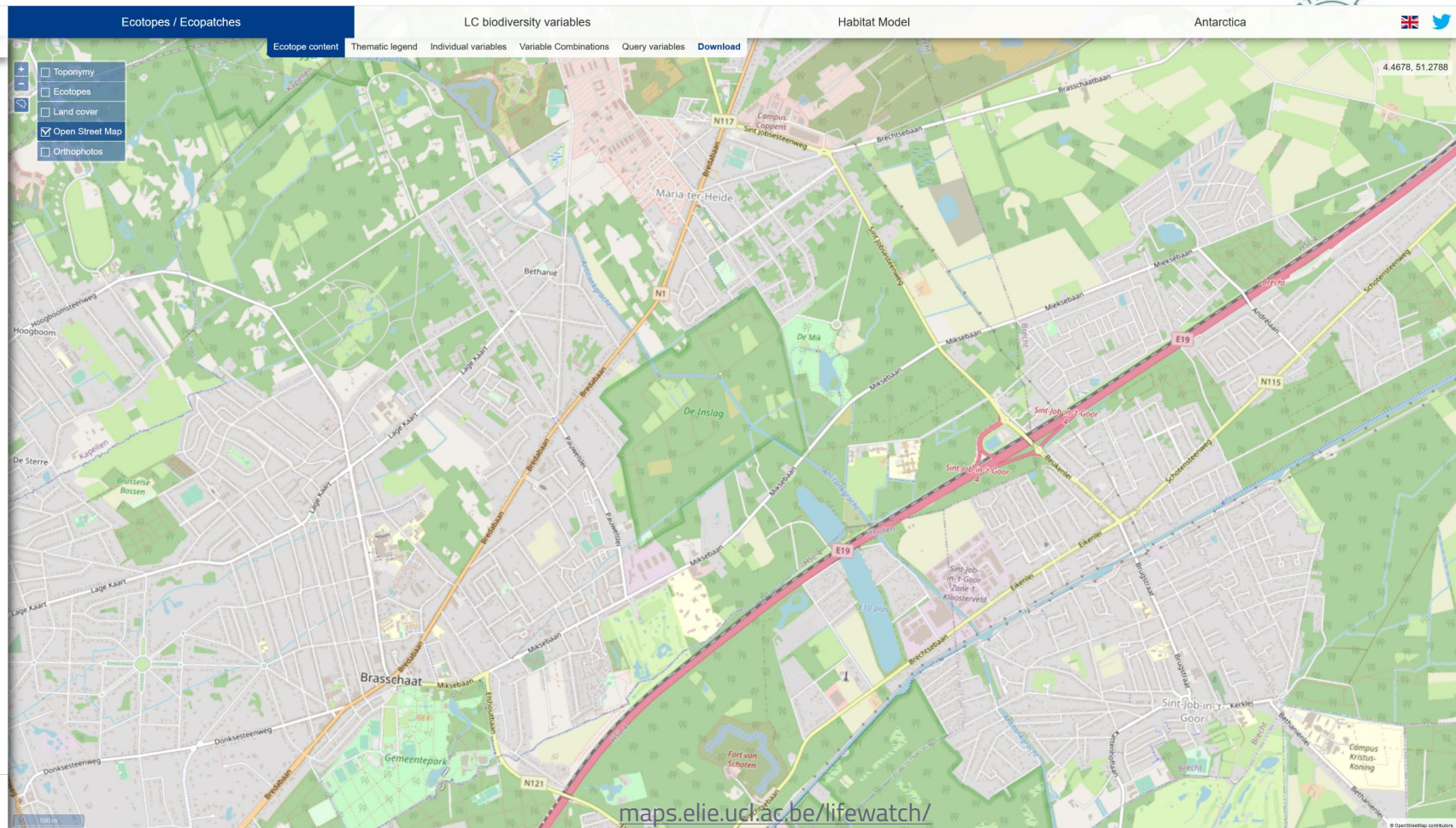


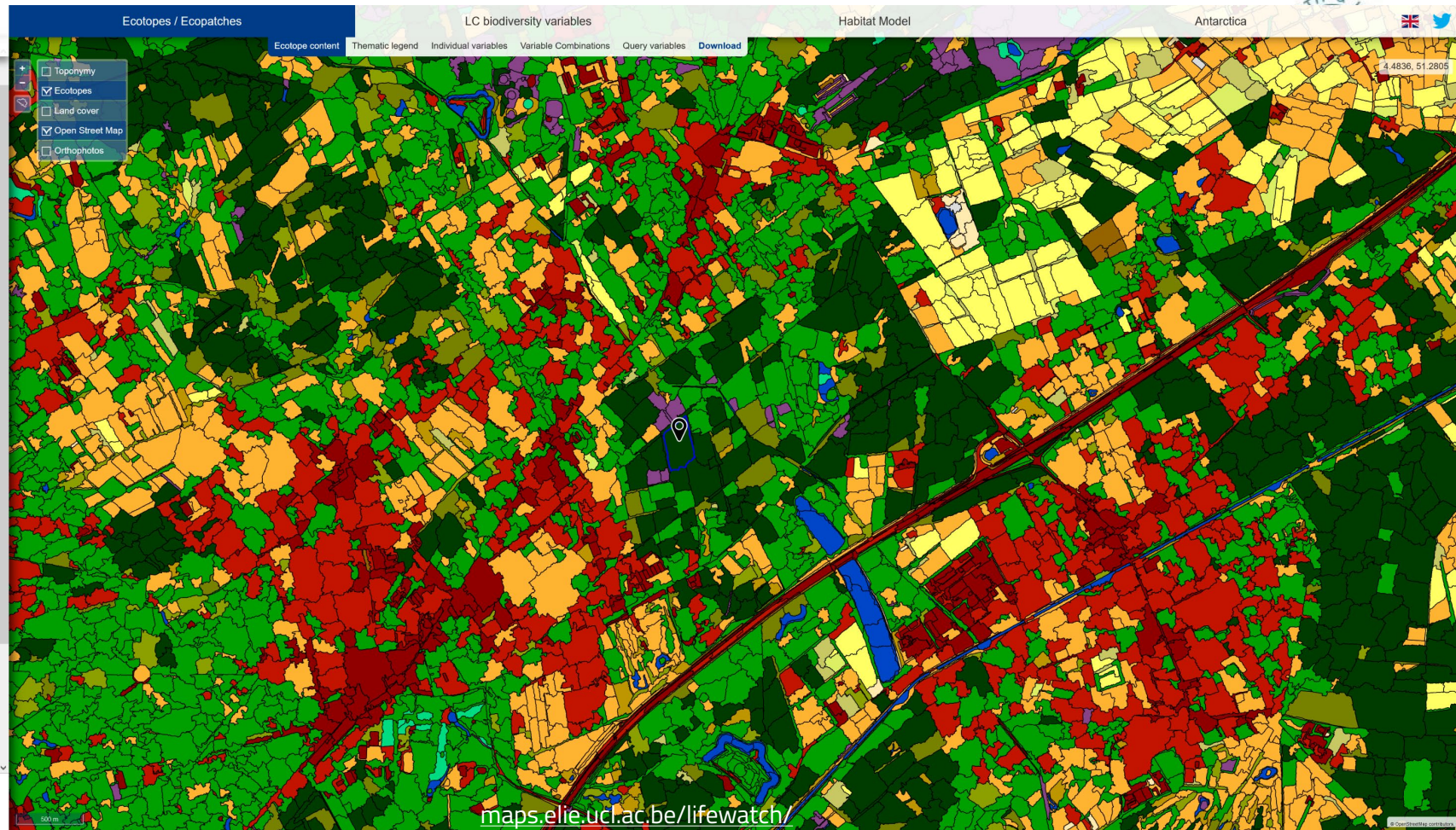
Thematic Remote Sensing

• Ecotopes:

- Spatial regions/polygons at ecologically relevant scale
- Each ecotope integrates 100+ variables
 - Topography
 - Context (proximity to roads etc.)
 - Land cover
 - Soils
 - Climate







Choose a legend :

LCCS ▼

Land cover variables

☒ Tree cover, mixed leaf type
(broadleaved and needleleaved)

detail in the ecopatch:

54% 39%

Topographic variables

Elevation: 22.21 m

Slope: 0 °

Topographic Position Index

1km: 1.5241

Potential incident light (spring): 2233.59

W/m²

Other

Artificial night light: 1.5 %

Distance to settlements: 9.62547 m

Distance to roads: 4.86139 m

Ecotopes / Ecopatches

LC biodiversity variables

Habitat Model

Antarctica

- ☒ Toponymy
- ☒ Ecopatches
- ☐ Ecotopes
- ☐ Land cover
- ☒ Open Street Map
- ☐ Orthophotos

Ecotope content

Thematic legend

Individual variables

Variable Combinations

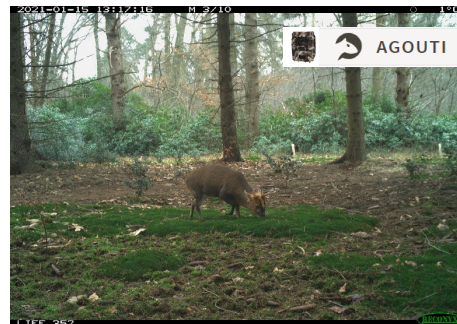
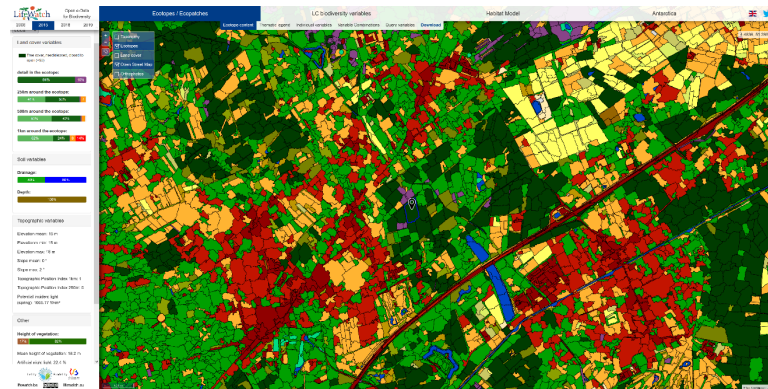
Query variables

Download



Collaborations

Solving climate change questions by combing data



Virtual labs & open science

lifewatch.be/e-lab (dev)



Discover web services

Search for web service

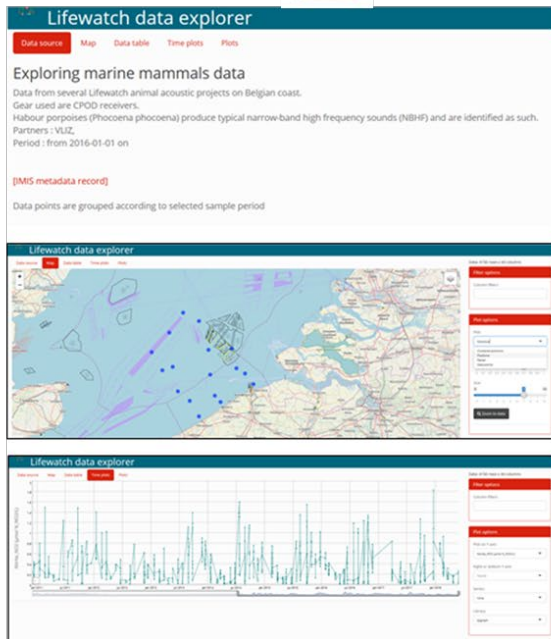
Select tags

M Marine T Terrestrial T Taxonomy E Environmental data R Regions

0 Global R Regional L Lifewatch E External

Name	Source	Description	Environment	Status
<input checked="" type="checkbox"/> Taxon match World Register of Marine Species (WoRMS)	WoRMS	The service matches your taxon list with the World Register of Marine Species (WoRMS), based on the ScientificName in the uploaded data file.	Marine	
<input checked="" type="checkbox"/> Taxon match Interim Register of Marine and Nonmarine Genera (IRMNG)	IRMNG	The service matches your taxon list with the Interim Register of Marine and Nonmarine Genera (IRMNG), based on the ScientificName in the uploaded data file.	Marine Terrestrial	Under development

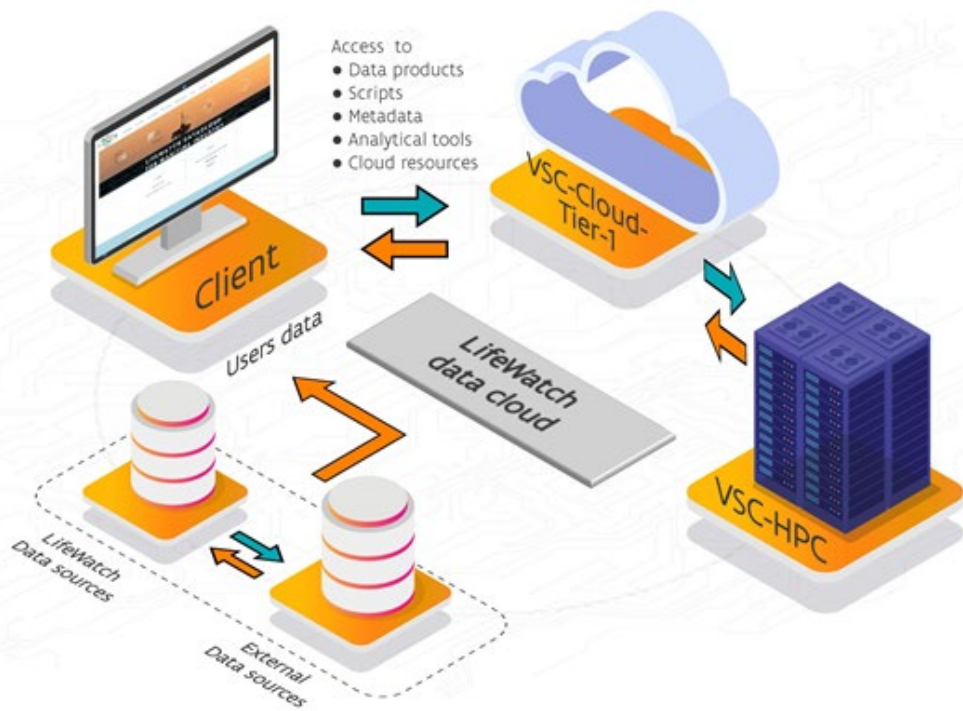
data explorer



software packages



Virtual labs & open science

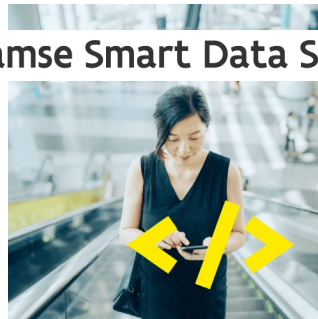


Virtual labs & open science

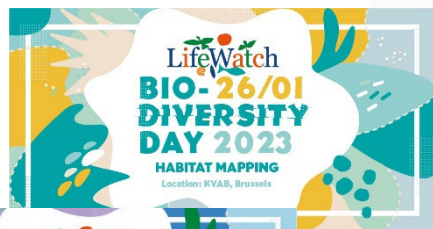
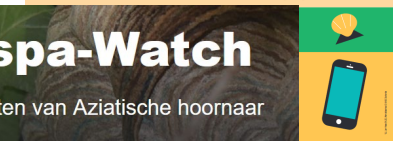
- Data sharing
- Data standards, best practices, guidelines
- Interoperability (EOSC, VSDS)
- Digital Twins



Vlaamse Smart Data Space



Outreach, valorisation, citizen science



SCIENCE



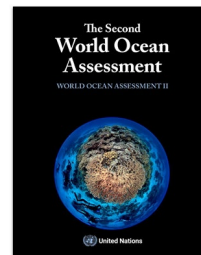
INDUSTRY



POLICY



CIVIL SOCIETY



OPEN PROTOCOL



Use of biodiversity monitoring data
in private decision making



Thank you

Lennert Schepers
lennert.schepers@vliz.be
info@lifewatch.be

