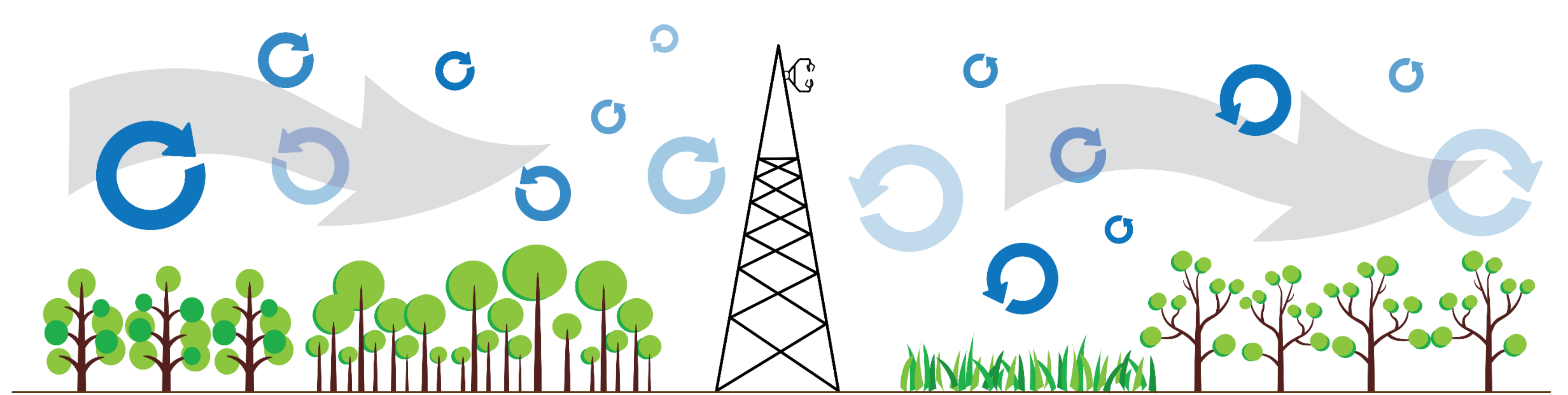


ICOS

INTEGRATED
CARBON
OBSERVATION
SYSTEM



The Integrated Carbon Observation System is a European research infrastructure that provides long-term observations for better understanding greenhouse gas emissions and the carbon cycle in Europe

ICOS Belgium

ICOS Belgium hosts 11 ICOS monitoring stations, of which 2 are located outside Belgium, operated by 7 research institutes and universities.

- **7 Ecosystem Stations:** Brasschaat, Dorinne, Lochristi, Lonzée, Maasmechelen, Vielsalm and Yangambi (Democratic Republic of the Congo)
- **3 Ocean Stations:** VLIZ Buoy and research vessels Simon Stevin and Belgica
- **1 Atmosphere Station:** Observatoire de l'Atmosphère du Mado at La Réunion

The University of Antwerp is co-hosting the Ecosystem Thematic Centre.

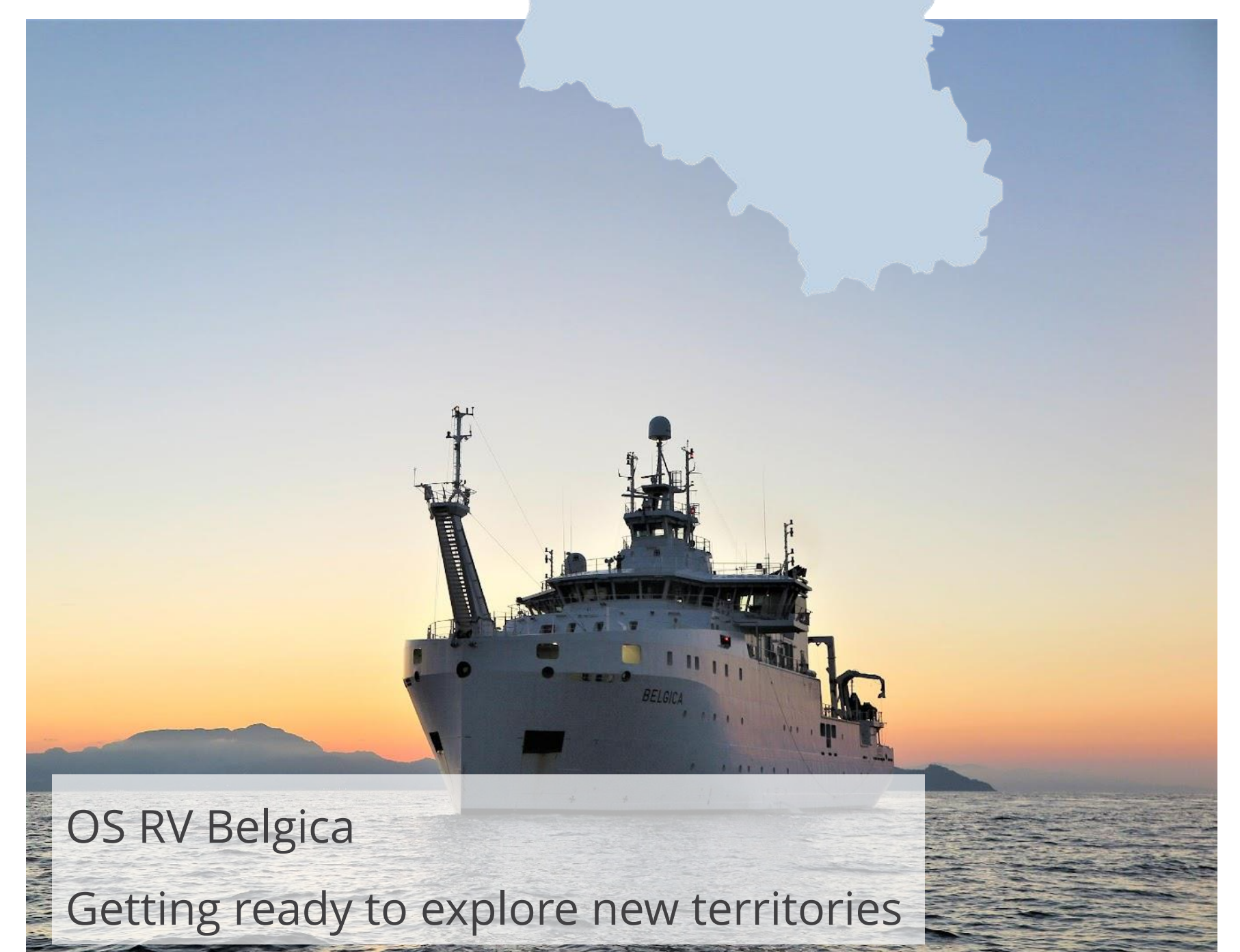


ES Brasschaat
Collecting data since 1996

Long history and continuous innovation

The Belgian network includes **two of the longest-running stations** (since 1996) in the world:
ES Brasschaat and ES Vielsalm.

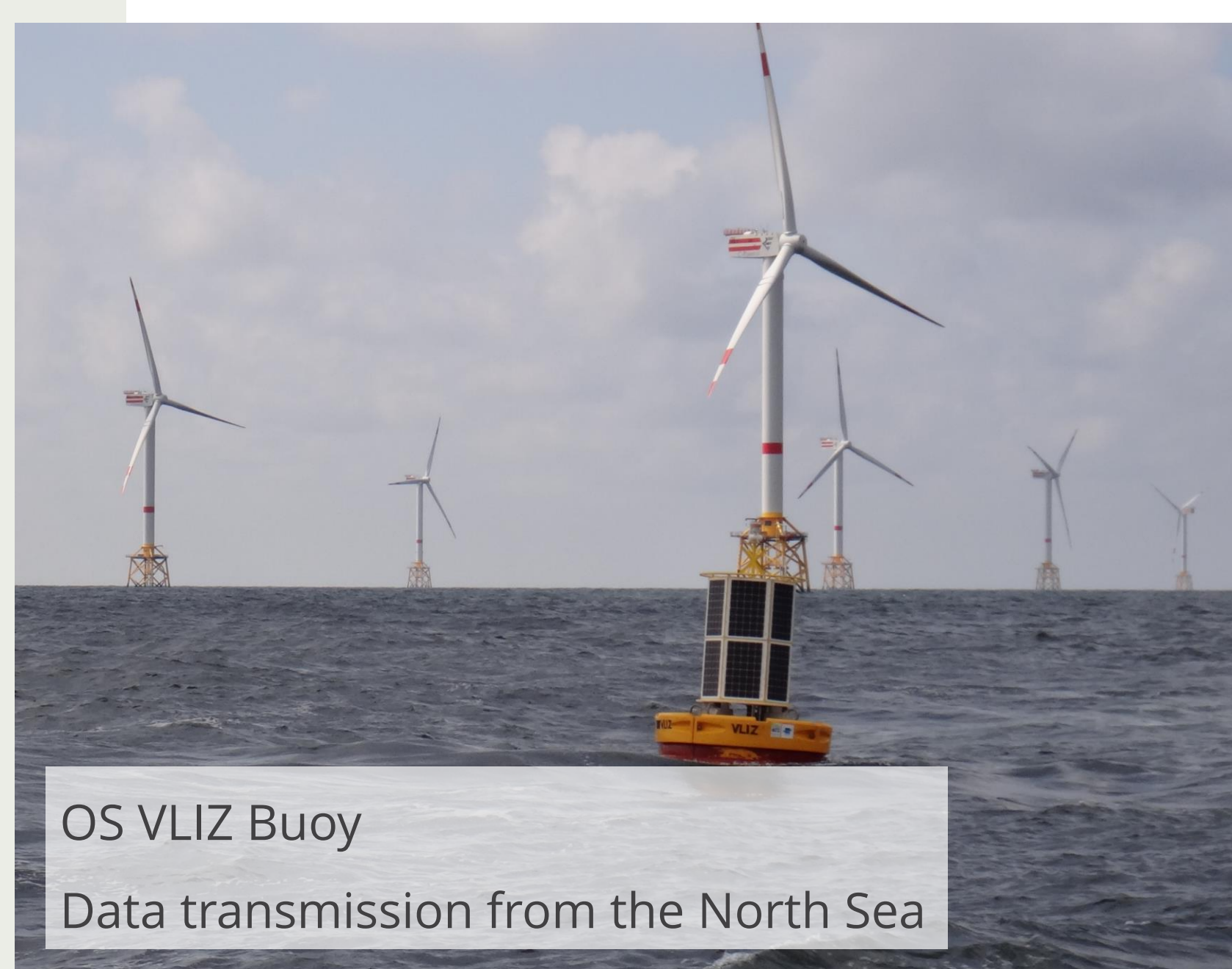
The new oceanographic OS RV Belgica was **inaugurated in June 2022** and is now ready for expeditions **from the Black Sea to arctic areas**.



OS RV Belgica
Getting ready to explore new territories

Unique measuring sites

The Belgian network covers a wide range of landscapes and even includes some exceptional measuring sites.



OS VLIZ Buoy
Data transmission from the North Sea



ES Dorinne
Carbon uptake by grazed grassland



ES Maasmechelen
Heathland fluxes in the national park

Measuring outside Europe



ES Yangambi
The first of its kind in the Congo Basin



Yangambi (or Congoflux) is the very first station monitoring fluxes in the **Congo Basin**. Reaching high above the canopy and **collecting data since 2020**, this 55 m tower enables a better understanding of the role of tropical forests for carbon sequestration.



The only atmospheric station within the Belgian network is located on **La Réunion**. Here, background concentrations for greenhouse gases in the **Indian Ocean** are measured 87 m and 2100 m above sea level.

The ICOS Belgium consortium



Universiteit
Antwerpen



UCLouvain



GHENT
UNIVERSITY



LIÈGE
université



MUSEUM
NATUURWETENSCHAPPEN



With the support of



Vlaanderen
verbeelding werkt



Wallonie
service public
SPW



Contact

www.icos-belgium.be

